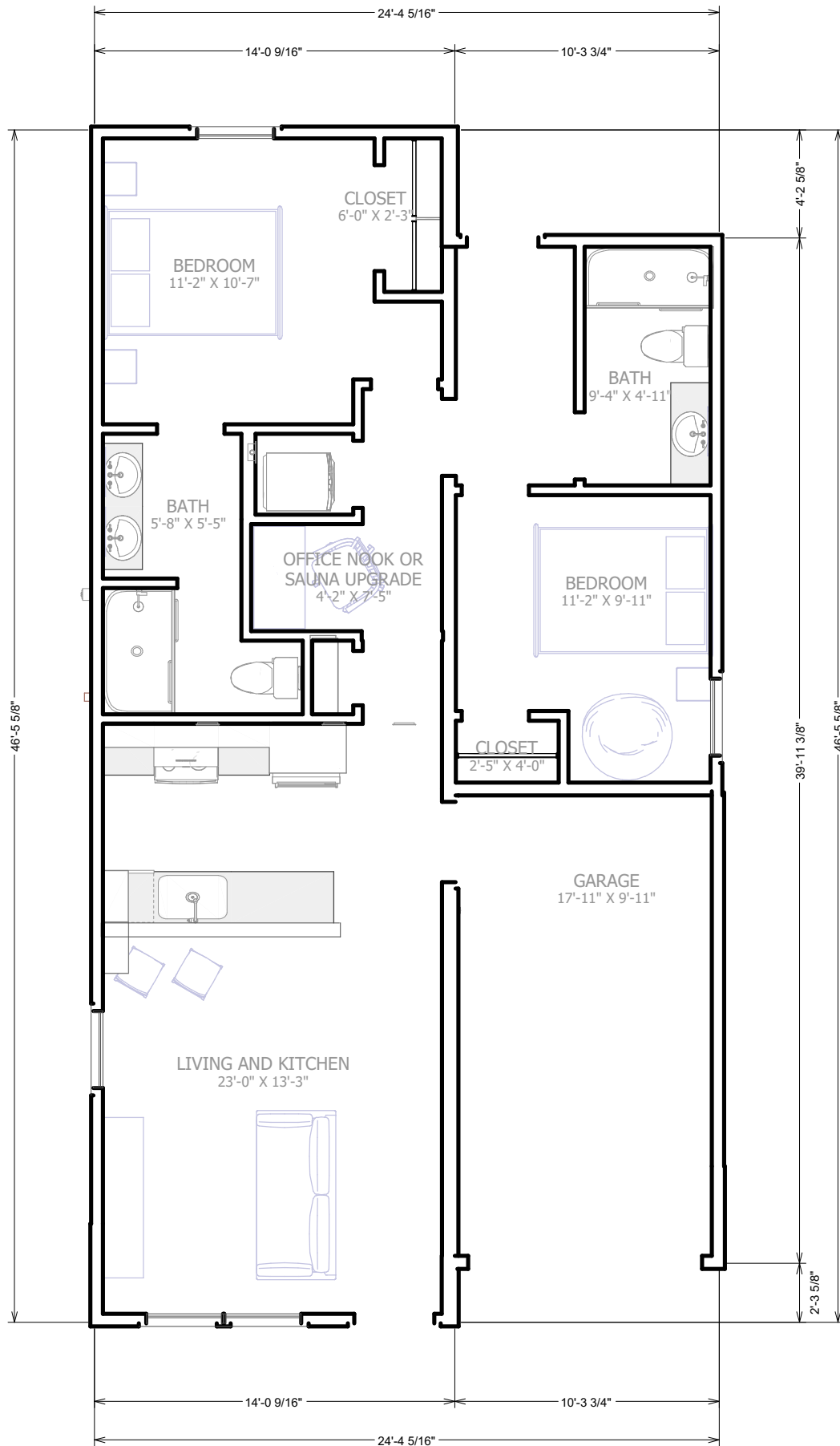
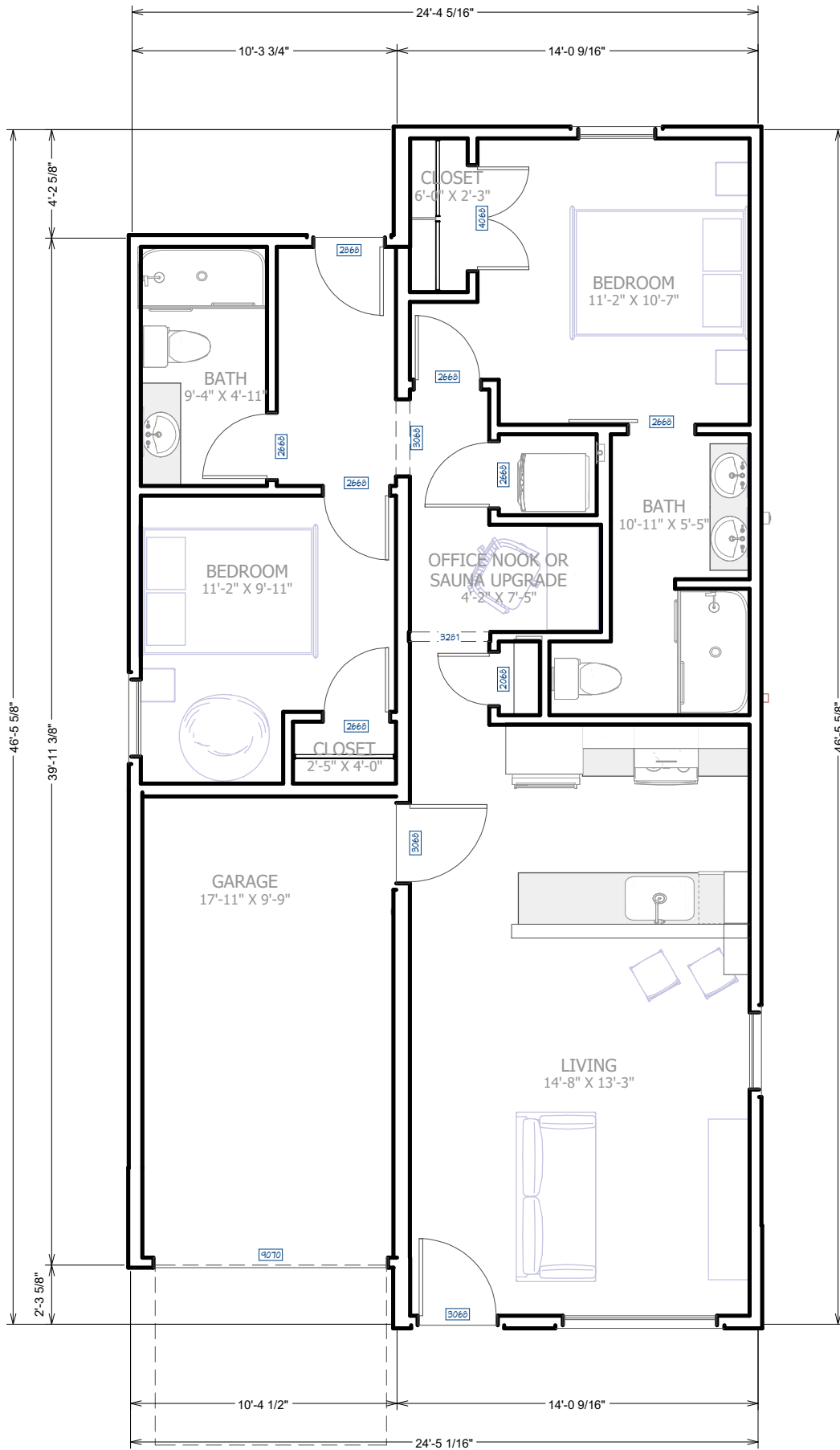
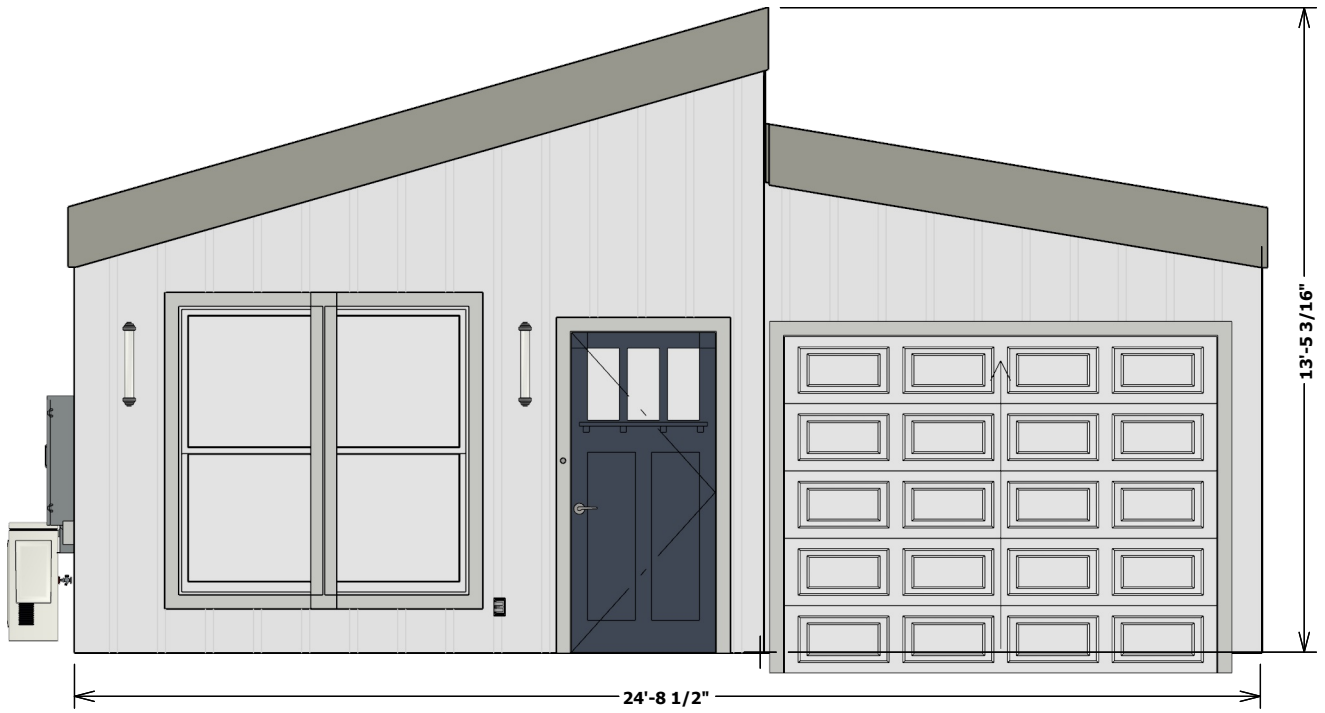




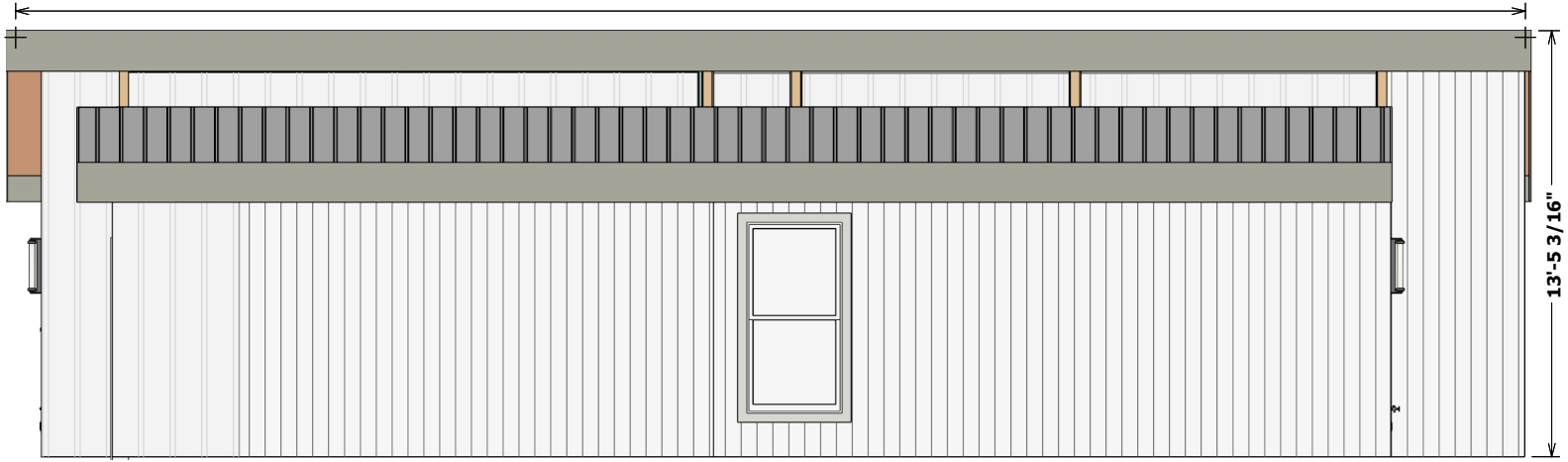
2 bed / 2 bath  
Size: 875 sq ft



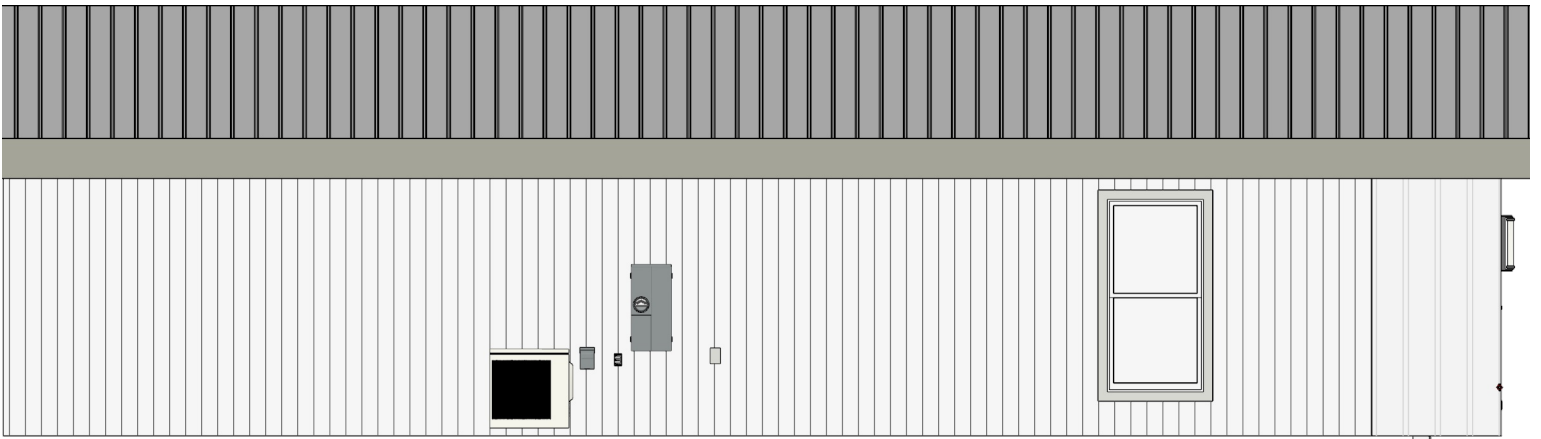




47'-7 5/8"



13'-5 3/16"







## FRAMING

Type: Wood

## FOUNDATION

Slab on grade

## INSULATION

<u>Standard Homes</u>	<u>Energy Star Homes</u>
R13 Walls	R20 Walls
R38 Roof	R48 Roof

**CERTIFICATIONS** *Certifications are only available on lots owned by Almond Branch Homes*



## SIDING

LP Smart Siding  
LP Board and Batten on the front

## ROOFING

Class 4 metal roof (lowers your insurance)

## MECHANICAL

- 27Kw Tankless Hot Water (with pre-filter)
- Fresh air system (ERV)
- 18k BTU HVAC System- Efficient heating down to -13°F
- Anti-freeze exterior faucets
- <3 ACH-50 Air tightness (most homes are 8+)
- Smart garage door opener

## UPGRADE OPTIONS

- Sauna instead of the office nook
- Electric fireplace and mantle
- Water Filtration System
- Oto Lawn Sprinkler
- Smart Home Package- Ring Alarm, doorbell, smart garage door

## INTERIOR

- White interior doors
- 4" baseboard and door trim
- Vinyl plank flooring
- Office nook

## KITCHEN

- Shaker style Pebble Gray or North Sea blue kitchen cabinets
- 3cm White and black speckle granite kitchen countertops
- *Upgrade kitchen package: White or Adriatic cabinets, satin brass hardware throughout, satin brass door pulls, premium quartz countertops*
- Stainless steel sink
- 1/2 HP Disposal
- Stainless steel dishwasher
- Stainless steel range
- 17cu.ft. Stainless Steel Refrigerator (only on Energy Star Homes)



Home Buyers Warranty®

visit us online at:  
[www.almondbranchhomes.com](http://www.almondbranchhomes.com)



STANDARD COLOR OPTIONS



UPGRADE COLOR OPTIONS

